



BDASC
advocacy days
2026

2026 Legislative Facebook



Scan For Information on
House Bill 3934

South Carolina House Bill 3934

This bill aims to protect patients from unfair insurance practices known as “copay accumulators.” These programs let insurance companies take payments from copay assistance programs but don’t count them toward a patient’s deductible or out-of-pocket limit.

If passed, H.3934 would require insurers to credit all payments made by or on behalf of a patient toward their cost-sharing responsibilities. This change would help patients better afford their medications and avoid unexpected costs.

The bill was introduced in February 2025 and is currently under review in the House Labor, Commerce, and Industry Committee.



Scan For Information on
Senate Bill 330

South Carolina Senate Bill 330

Senate Bill 330 is the companion to House Bill 3934 and focuses on protecting patients from “copay accumulator” programs used by insurance companies and pharmacy benefit managers (PBMs).

This bill would require all payments made by or on behalf of a patient—including copay assistance—to count toward their deductible and out-of-pocket limits. It also prevents insurers from designing benefit plans based on whether a patient receives copay help.

Introduced in February 2025, S.330 is currently under review in the Senate Banking and Insurance Committee.



Learn More About
Your Legislator

Please note, all members of the House of Representatives or Senate that are highlighted in teal have currently signed on as co-sponsors of one of our two bills (H.3934 or S.330).

South Carolina House of Representatives



Rep. Terry Alexander
314C Blatt Bldg.

Democrat

District 59 - Florence & Marion Counties



Rep. Carl L. Anderson
304C Blatt Bldg.

Democrat

District 103 - Berkeley, Georgetown & Horry Counties



Rep. Lucas Atkinson
333B Blatt Bldg.

Democrat

District 57 - Horry, Marion & Williamsburg Counties



Rep. William Bailey
530D Blatt Bldg.

Republican

District 104 - Horry County



Rep. Nathan Ballentine
320B Blatt Bldg.

Republican

District 71 - Lexington & Richland Counties



Rep. Justin T. Bamberg
335C Blatt Bldg.

Democrat

District 90 - Bamberg, Colleton, Dorchester & Orangeburg Counties



Rep. Bruce W. Bannister
525 Blatt Bldg.

Republican

District 24 - Greenville County



Rep. Heather Bauer
330A Blatt Bldg.

Democrat

District 75 - Richland County

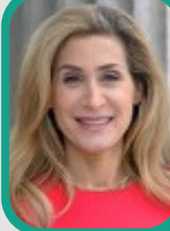
South Carolina House of Representatives



Rep. Tom Beach
304B Blatt Bldg.

Republican

**District 10 - Anderson,
Greenville & Pickens
Counties**



Rep. Beth Bernstein
532C Blatt Bldg.

Democrat

**District 78 -
Richland County**



Rep. Phillip Bowers
404D Blatt Bldg.

Republican

**District 3 - Pickens
County**



**Rep. Jeffrey A. "Jeff"
Bradley**
202 Blatt Bldg.

Republican

**District 123 - Beaufort &
Jasper Counties**



Rep. Gary S. Brewer, Jr.
310A Blatt Bldg.

Republican

**District 114 -
Charleston &
Dorchester Counties**



**Rep. Thomas C. "Case"
Brittain, Jr.**
522D Blatt Bldg.

Republican

**District 107 - Horry
County**



**Rep. James Mikell
"Mike" Burns**
326D Blatt Bldg.

Republican

**District 17 - Greenville
County**



**Rep. Joseph M. "Joe"
Bustos**
308D Blatt Bldg.

Republican

**District 112 - Charleston
County**

South Carolina House of Representatives



Rep. Paula Rawl Calhoon
308B Blatt Bldg.

Republican

District 87 - Lexington County



Rep. Micajah P. "Micah" Caskey IV
519C Blatt Bldg.

Republican

District 89 - Lexington County



Rep. Donald G. "Don" Chapman
436D Blatt Bldg.

Republican

District 8 - Anderson County



Rep. William M. "Bill" Chumley
326A Blatt Bldg.

Republican

District 35 - Greenville & Spartanburg Counties



Rep. William "Bill" Clyburn
416C Blatt Bldg.

Democrat

District 82 - Aiken, Edgefield & Saluda Counties



Rep. Gilda Cobb-Hunter
309C Blatt Bldg.

Democrat

District 95 - Dorchester & Orangeburg Counties



Rep. Neal A. Collins
418C Blatt Bldg.

Republican

District 5 - Greenville & Pickens Counties

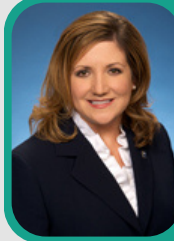
South Carolina House of Representatives



Rep. Brandon L. Cox
330D Blatt Bldg.

Republican

District 92 - Berkeley County



Rep. Heather Ammons Crawford
522B Blatt Bldg.

Republican

District 68 - Horry County



Rep. April Cromer
434B Blatt Bldg.

Republican

District 6 - Anderson County



Rep. Sylleste Davis
425 Blatt Building

Republican

District 100 - Berkeley County



Rep. Chandra E. Dillard
414B Blatt Bldg.

Democrat

District 23 - Greenville County



Rep. Adam L. Duncan
530A Blatt Bldg.

Republican

District 2 - Oconee & Pickens Counties



Rep. Sarita L. Edgerton
420D Blatt Bldg.

Republican

District 34 - Spartanburg County



Rep. Shannon S. Erickson
429 Blatt Bldg.

Republican

District 124 - Beaufort County

South Carolina House of Representatives



Rep. Greg Ford
330D Blatt Bldg.

Republican

**District 68 -
Dorchester County**



Rep. Cal Forrest
323C Blatt Bldg.

Republican

**District 39 -
Lexington & Saluda
Counties**



Rep. Stephen Frank
312A Blatt Bldg.

Republican

**District 20 -
Greenville County**



Rep. Craig Gagnon
328B Blatt Bldg.

Republican

**District 11 -
Abbeville, Anderson
& Laurens Counties**



Rep. Kambrell Garvin
335D Blatt Bldg.

Democrat

**District 77 - Richland
County**



Rep. Gil Gatch
310B Blatt Bldg.

Republican

**District 94 - Charleston
& Dorchester Counties**



Rep. Daniel Gibson
314D Blatt Building

Republican

**District 12 -
Greenwood &
McCormick
Counties**



**Rep. Leon D. "Doug"
Gilliam**
420C Blatt Bldg.

Republican

**District 42 - Laurens &
Union Counties**

South Carolina House of Representatives



Rep. Wendell G. Gilliard
328D Blatt Bldg.

Democrat

**District 111 -
Charleston County**



**Rep. Thomas Lee
Gilreath**
414A Blatt Bldg.

Republican

**District 7 - Abbeville,
Anderson & Greenville
Counties**



Rep. Jerry N. Govan, Jr.
304D Blatt Bldg.

Democrat

**District 93 - Calhoun,
Lexington &
Orangeburg Counties**



Rep. Hamilton R. Grant
333A Blatt Bldg.

Democrat

**District 79 - Richland
County**



Rep. Val Guest
522A Blatt Bldg.

Republican

**District 106 - Horry
County**



Rep. Brandon Guffey
306A Blatt Bldg.

Republican

**District 48 - York
County**



Rep. Patrick B. Haddon
534 Blatt Bldg.

Republican

**District 19 - Greenville
County**



**Rep. William "Bill"
Hager**
432D Blatt Bldg.

Republican

**District 122 - Beaufort,
Colleton, Hampton &
Jasper Counties**

South Carolina House of Representatives



Rep. Kevin Hardee
404C Blatt Building

Republican

District 105 - Horry County



Rep. Robert J. "Rob" Harris
434D Blatt Bldg.

Republican

District 36 - Spartanburg County



Rep. Chris Hart
432B Blatt Bldg.

Democrat

District 73 - Richland County



Rep. Thomas F. "Tom" Hartnett, Jr.
416A Blatt Bldg.

Republican

District 110 - Charleston County



Rep. Charles Hartz
416D Blatt Bldg.

Republican

District 81 - Aiken County



Rep. Jackie E. "Coach" Hayes
333C Blatt Bldg.

Republican

District 55 - Dillon, Florence, Horry & Marlboro Counties



Rep. Rosalyn D. Henderson-Myers, Ph.D.
530C Blatt Bldg.

Democrat

District 31 - Spartanburg County



Rep. William G. "Bill" Herbkersman
407 Blatt Bldg.

Republican

District 118 - Beaufort Count

South Carolina House of Representatives



Rep. Lee Hewitt
327D Blatt Bldg.

Republican

**District 108 -
Charleston &
Georgetown
Counties**



Rep. David R. Hiott
518C Blatt Bldg.

Republican

**District 4 - Pickens
County**



**Rep. William M. "Bill"
Hixon**
411 Blatt Bldg.

Republican

**District 83 - Aiken &
Edgefield Counties**



Rep. Harriet A. Holman
323D Blatt Bldg.

Republican

**District 102 - Berkeley
& Dorchester Counties**



Rep. Lonnie Hosey
404B Blatt Bldg.

Democrat

**District 91 -
Allendale, Barnwell
& Orangeburg
Counties**



Rep. Leon Howard
530B Blatt Bldg.

Democrat

**District 76 -
Richland County**



**Rep. William C. "Chris"
Huff**
414D Blatt Bldg.

Republican

**District 28 - Greenville
County**



**Rep. Jeffrey E.
"Jeff" Johnson**
228 Blatt Bldg.

Republican

**District 58 - Horry
County**

South Carolina House of Representatives



Rep. Jermaine L. Johnson, Sr.
330B Blatt Bldg.

Democrat

District 52 - Kershaw & Richland Counties



Rep. Wendell K. Jones
414C Blatt Bldg.

Democrat

District 25 - Greenville County



Rep. Wallace H. "Jay" Jordan, Jr.
519B Blatt Bldg.

Republican

District 63 - Florence County



Rep. Jay Kilmartin
320A Blatt Bldg.

Republican

District 85 - Lexington County



Rep. John Richard C. King
309B Blatt Bldg.

Democrat

District 49 - York County



Rep. Roger Kirby
314B Blatt Bldg.

Democrat

District 101 - Berkeley, Florence & Williamsburg Counties



Rep. Kathy Landing
418A Blatt Bldg.

Republican

District 80 - Charleston County



Rep. John T. Lastinger, Jr.

323A Blatt Bldg.

Democrat

District 88 - Lexington County

South Carolina House of Representatives



Rep. M. Brian Lawson
402D Blatt Bldg.

Republican

**District 30 - Cherokee
& Spartanburg
Counties**



**Rep. Thomas R. "Randy"
Ligon**
306C Blatt Bldg.

Republican

**District 43 - Chester &
York Counties**



**Rep. Steven Wayne
Long**
402B Blatt Bldg.

Republican

**District 37 -
Spartanburg
County**



Rep. Phillip D. Lowe
330B Blatt Bldg.

Republican

**District 60 - Florence
County**



Rep. Jason S. Luck
333D Blatt Bldg.

Republican

**District 54 -
Chesterfield,
Darlington, Dillon &
Marlboro Counties**



**Rep. Josiah
Magnuson**
434C Blatt Bldg.

Republican

**District 38 -
Spartanburg County**



Rep. David Martin
306D Blatt Bldg.

Republican

**District 26 - York
County**



Rep. Donald McCabe
320C Blatt Bldg.

Republican

**District 96 - Lexington
County**

South Carolina House of Representatives



Rep. John R. McCravy III
420B Blatt Bldg.

Republican

District 13 - Greenwood & Laurens Counties



Rep. Annie McDaniel
330C Blatt Bldg.

Democrat

District 41 - Chester, Fairfield & Richland Counties



Rep. Tim McGinnis
522C Blatt Bldg.

Republican

District 56 - Horry County



Rep. Cody T. Mitchell
422B Blatt Bldg.

Republican

District 65 - Chesterfield, Darlington, Kershaw & Lancaster Counties



Rep. Dianne Mitchell
312D Blatt Bldg.

Republican

District 21- Greenville County



Rep. W. Scott Montgomery IV
402A Blatt Bldg.

Republican

District 32 - Spartanburg County



Rep. JA Moore
432A Blatt Bldg.

Democrat

District 15 - Berkeley & Charleston Counties



Rep. Travis A. Moore
402C Blatt Bldg.

Republican

District 33 - Spartanburg County

South Carolina House of Representatives



Rep. Alan Morgan
312C Blatt Bldg.

Republican

**District 18 -
Greenville County**



Rep. Dennis C. Moss
503A Blatt Bldg.

Republican

**District 29 -
Cherokee,
Spartanburg & York
Counties**



Rep. Mike Neese
404A Blatt Bldg.

Republican

**District 44 -
Lancaster County**



**Rep. Brandon
Newton**
518B Blatt Bldg.

Republican

**District 45 - Kershaw
& Lancaster
Counties**



**Rep. Wm. Weston J.
Newton**
512 Blatt Bldg.

Republican

**District 120 - Beaufort &
Jasper Counties**



**Rep. Melissa Lackey
Oremus**
418B Blatt Bldg.

Republican

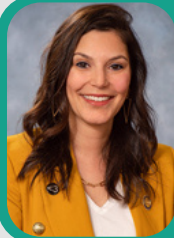
**District 84 - Aiken
County**



**Rep. Jordan S.
Pace**
434A Blatt Bldg.

Republican

**District 117 -
Berkeley County**



Rep. Fawn M. Pedalino
418D Blatt Bldg.

Republican

**District 64 - Clarendon &
Sumter Counties**

South Carolina House of Representatives



Rep. Tommy Pope
505 Blatt Bldg.

Republican

**District 47 - York
County**



Rep. Luke S. Rankin
420A Blatt Bldg.

Republican

**District 14 -
Laurens County**



Rep. Robert Reese
314A Blatt Bldg.

Democrat

**District 70 - Kershaw
& Richland Counties**



Rep. Michael Rivers
432C Blatt Bldg.

Democrat

**District 121 -
Beaufort & Colleton
Counties**



Rep. Robby Robbins
310D Blatt Bldg.

Republican

**District 97 - Colleton
& Dorchester
Counties**



Rep. Seth Rose
532D Blatt Bldg.

Democrat

**District 72 - Richland
County**



**Rep. Todd
Rutherford**
335B Blatt Bldg.

Democrat

**District 74 -
Richland County**



**Rep. Richard
Sanders**
436A Blatt Bldg.

Republican

**District 9 -
Anderson County**

South Carolina House of Representatives



Rep. Carla Schuessler
422A Blatt Bldg.

Republican

District 61 - Horry County



Rep. Keishan M. Scott
422D Blatt Bldg.

Democrat

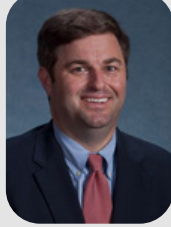
District 50 - Kershaw, Lee & Sumter Counties



Rep. Heath Sessions
306B Blatt Bldg.

Republican

District 46 - York County



Rep. G. Murrell Smith, Jr.
506 Blatt Bldg.

Republican

District 67 - Sumter County



Rep. Marvin "Mark" Smith
327A Blatt Bldg.

Republican

District 99 - Berkeley County



Rep. Tiffany Spann-Wilder
328B Blatt Bldg.

Democrat

District 109 - Charleston & Dorchester Counties



Rep. Leon Stavrinakis
532A Blatt Bldg.

Democrat

District 119 - Charleston County



Rep. Bill Taylor
416B Blatt Bldg.

Republican

District 86 - Aiken & Lexington Counties

South Carolina House of Representatives



Rep. James E. Teeple
308A Blatt Bldg.

Republican

**District 116 -
Charleston & Colleton
Counties**



Rep. Jackie Terrible
304A Blatt Bldg.

Republican

**District 66 - York
County**



Rep. David Vaughan
326B Blatt Bldg.

Republican

**District 27 - Greenville
County**



Rep. Courtney S. Waters
328A Blatt Bldg.

Democrat

**District 113 - Charleston
County**



**Rep. J. David
Weeks**
308C Blatt Bldg.

Democrat

**District 51 -
Sumter County**



**Rep. Elizabeth
"Spencer"
Wetmore**
422C Blatt Bldg.

Democrat

**District 115 -
Charleston County**



**Rep. Joseph S. "Joe"
White**
320D Blatt Bldg.

Republican

**District 40 -
Lexington &
Newberry Counties**



**Rep. William R. "Bill"
Whitmire**
436C Blatt Bldg.

Republican

**District 1 - Oconee &
Pickens Counties**

South Carolina House of Representatives



Rep. Paul Wickensimer
312D Blatt Bldg.

Republican

**District 22 -
Greenville County**



Rep. Robert Q. Williams
328C Blatt Bldg.

Democrat

**District 62 -
Darlington &
Florence Counties**



Rep. Mark N. Willis
326C Blatt Bldg.

Republican

**District 16 -
Greenville &
Laurens Counties**



Rep. Chris Wooten
323B Blatt Bldg.

Republican

**District 69 -
Lexington County**



Rep. Richard Yow
327C Blatt Bldg.

Republican

**District 53 -
Chesterfield,
Darlington & Lancaster
Counties**

South Carolina Senators



Senator Brian Adams
602 Gressette Bldg.

Republican

District 44 - Berkeley & Charleston Counties



Senator Thomas C. Alexander
213 Gressette Bldg.

Republican

District 1 - Oconee & Pickens Counties



Senator Karl B. Allen
610 Blatt Bldg.

Democrat

District 7 - Greenville County



Senator Sean Bennett
205 Gressette Bldg.

Republican

District 38 - Charleston & Dorchester Counties



Senator Allen Blackmon
510 Gressette Bldg.
Republican

District 27 - Chesterfield, Kershaw & Lancaster Counties



Senator Lee Bright
608 Gressette Bldg.

Republican

District 12 - Greenville & Spartanburg Counties



Senator George E. "Chip" Campsen III
305 Gressette Bldg.

Republican

District 43 - Beaufort, Charleston & Colleton Counties



Senator Richard J. Cash
506 Gressette Bldg.

Republican

District 3 - Anderson County

South Carolina Senators



Senator JD Chaplin
512 Gressette Bldg.

Republican

**District 29 - Chesterfield,
Darlington, Lee, Marlboro
& Sumter Counties**



Senator Wes Climer
404 Gressette Bldg.

Republican

**District 15 - York
County**



Senator Tom Corbin
501 Gressette Bldg.

Republican

**District 5 - Greenville &
Spartanburg Counties**



Senator Ronnie Cromer
410 Gressette Bldg.

Republican

**District 18 - Lexington,
Newberry & Richland
Counties**



Senator Tom Davis
203 Gressette Bldg.

Republican

**District 46 - Beaufort &
Jasper Counties**



**Senator Tameika
Isaac Devine**
612 Gressette Bldg.

Democrat

**District 19 - Richland
County**



**Senator Jason
Elliott**
502 Gressette Bldg.

Republican

**District 6 -
Greenville County**



**Senator Tom
Fernandez**
606 Gressette Bldg.

Republican

**District 39 - Berkeley,
Dorchester &
Orangeburg Counties**

South Carolina Senators



Senator Mike Gambrell
504 Gressette Bldg.

Republican

**District 4 - Abbeville &
Anderson Counties**



Senator Billy Garrett
604 Gressette Bldg.

Republican

**District 10 -
Greenwood,
Lexington & Saluda
Counties**



**Senator Stephen
Goldfinch**
602 Gressette Bldg.

Republican

**District 34 -
Georgetown &
Horry Counties**



**Senator Jeffrey R.
Graham**
602 Gressette Bldg.

Democrat

**District 35 - Kershaw,
Lee, Richland & Sumter
Counties**



Senator Larry Grooms
602 Gressette Bldg.

Republican

**District 37 - Berkeley
& Charleston Counties**



Senator Greg Hembree
402 Gressette Bldg.

Republican

**District 28 - Horry
County**



Senator Brad Hutto
513 Gressette Bldg.

Democrat

**District 40 - Aiken,
Allendale, Bamberg,
Barnwell, Colleton &
Orangeburg Counties**



**Senator Darrell
Jackson**
612 Gressette
Bldg.

Democrat

**District 21-
Richland County**

South Carolina Senators



Senator Michael Johnson
510 Gressette Bldg.

Republican

**District 16 -
Lancaster & York
Counties**



Senator Carlisle Kennedy
601 Gressette Bldg.

Republican

**District 23 -
Lexington County**



Senator Josh Kimbrell
502 Gressette Bldg.

Republican

**District 11 - Spartanburg
County**



**Senator Matthew W.
"Matt" Leber**
504 Gressette Bldg.

Republican

**District 41 - Charleston,
Colleton & Dorchester
Counties**



Senator Shane R. Martin
211 Gressette Bldg.

Republican

**District 13 - Greenville,
Spartanburg & Union
Counties**



Senator Shane Massey
303 Gressette Bldg.

Republican

**District 25 - Aiken,
Edgefield, Lexington,
McCormick & Saluda
Counties**



**Senator Margie Bright
Matthews**
508 Gressette Bldg.

Democrat

**District 45 - Beaufort,
Charleston, Colleton,
Hampton & Jasper Counties**



Senator Roger Nutt
501 Gressette Bldg.

Republican

**District 12 - Greenville
& Spartanburg
Counties**

South Carolina Senators



Senator Russell Ott
513 Gressette Bldg.

Republican

**District 26 -
Calhoun, Lexington
& Richland Counties**



**Senator Harvey S.
Peeler, Jr.**
111 Gressette Bldg.

Republican

**District 14 - Cherokee,
Spartanburg, Union &
York Counties**



**Senator Luke
Rankin**
101 Gressette Bldg.

Republican

**District 33 - Horry
County**



**Senator Mike
Reichenbach**
604 Gressette Bldg.

Republican

**District 31 - Florence
County**



Senator Rex F. Rice
601 Gressette Bldg.

Republican

**District 2 - Greenville &
Pickens Counties**



Senator Ronnie A. Sabb
613 Gressette Bldg.

Republican

**District 32 - Berkeley,
Charleston, Florence,
Georgetown, Horry &
Williamsburg**



**Senator Everett
Stubbs**
506 Gressette Bldg.

Republican

**District 17 - Chester,
Fairfield, Lancaster &
York Counties**



Senator Ed Sutton
613 Gressette Bldg.

Democrat

**District 20 -
Charleston County**

South Carolina Senators



Senator Deon Tedder
508 Gressette Bldg.

Democrat

**District 42 -
Charleston &
Dorchester Counties**



Senator Ross Turner
512 Gressette Bldg.

Republican

**District 8 - Greenville
County**



**Senator Daniel B.
"Danny" Verdin III**
412 Gressette Bldg.

Republican

**District 9 -
Greenville, Laurens
& Union Counties**



**Senator Overture
Walker**
608 Gressette
Bldg.

Democrat

**District 22 -
Richland County**



Senator Kent Williams
608 Gressette Bldg.

Democrat

**District 30 -
Darlington, Dillon,
Florence, Horry &
Marion Counties**



**Senator Tom Young,
Jr.**
303 Gressette Bldg.

Republican

**District 24 - Aiken
County**



Senator Jeff Zell
601 Gressette Bldg.

Republican

**District 36 - Calhoun,
Clarendon, Orangeburg
& Sumter Counties**

Banking & Insurance Committee

House of Representatives

Rep. William Herbkersman, Chairman, R-118
Rep. Gil Gatch, 1st Vice Chair, R-94
Rep. Carl Anderson, 2nd Vice Chair, D-103
Rep. Gary Brewer, R-114
Rep. Don Chapman, R-8
Rep. Bill Hager, R-122
Rep. Craig A. Gagnon, R-11
Rep. Brandon Guffey, R-48
Rep. Jermaine L. Johnson Sr. , D-52
Rep. Roger K. Kirby, D-101
Rep. Brian Lawson, R-30
Rep. Randy Ligon, R-43
Rep. Melissa Lackey Oremus, R-84
Rep. Fawn Pedalino, R-64
Rep. Carla Schuessler, R-61
Rep. Mark Smith, R- 99
Rep. Robert Williams, D-62
Rep. Chris Wooten, R-69

Labor, Commerce & Industry Subcommittee

House of Representatives

Rep. Craig A. Gagnon, Chairman, R-11
Rep. Carla Schuessler, Vice Chairwoman, R-61
Rep. Jermaine L. Johnson, Sr., D-52
Rep. Randy Ligon, R-43
Rep. Melissa Lackey Oremus, R-84
Rep. Fawn Pedalino, R-64
Rep. Mark Smith, R- 99
Rep. Robert Williams, D-62

As of January 2026, all members of the committee and subcommittee have co-signed H.3934

Banking & Insurance

Senate

Senator Ronnie W. Cromer, Chairman, R-18

Senator Darrell Jackson, D-21

Senator Luke A. Rankin, R-33

Senator Thomas C. Alexander, R-1

Senator Tom Davis, R-46

Senator Sean M. Bennett, R-38

Senator Kent M. Williams, D-30

Senator Brad Hutto, D-40

Senator Ross Turner, R-8

Senator Michael W. Gambrell, R-4

Senator Billy Garrett, R-10

Senator Karl B. Allen, D-7

Senator Mike Reichenbach, R-31

Senator Allen Blackmon, R-27

Senator Carlisle Kennedy, R-23

Senator Matthew W. "Matt" Leber, R-41

Senator Lee Bright, R-12

*As of January 2026, all senators highlighted in bold
have co-signed S.330*

